

Instruction for mobile monitor

Remark: only the mobile phone with Windows Mobile and Symbian operating system can support the mobile phone monitor function.

1. DVR Setup

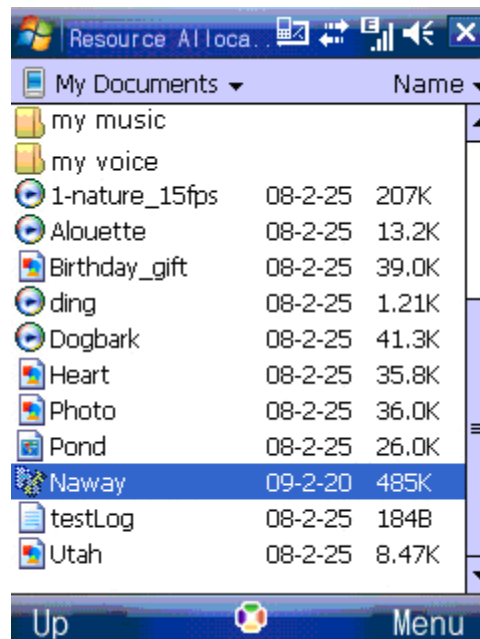
Please login MAIN MENU>>>>>NETWORK, setup MOBILE PORT:

2. Mobile phone setup

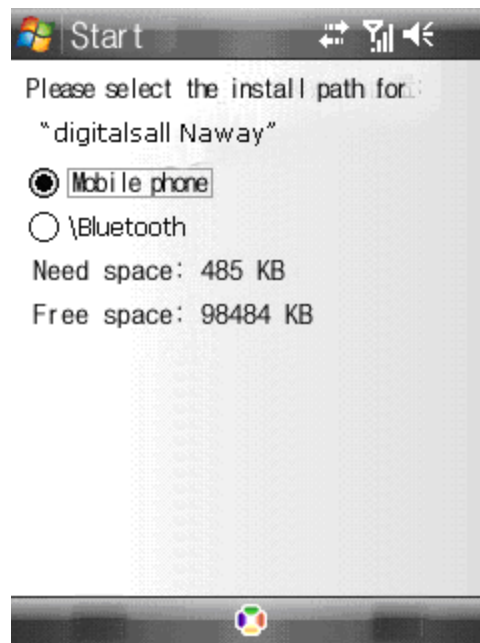
2.1 Windows Mobile Operating system

1) Program download

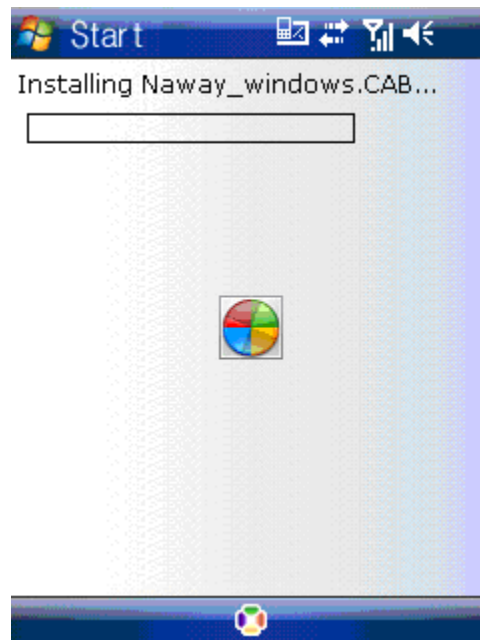
Please copy the installation program whose name is amplayersetup.CAB from the attached CD to your mobile phone, the default save path is My Documents.



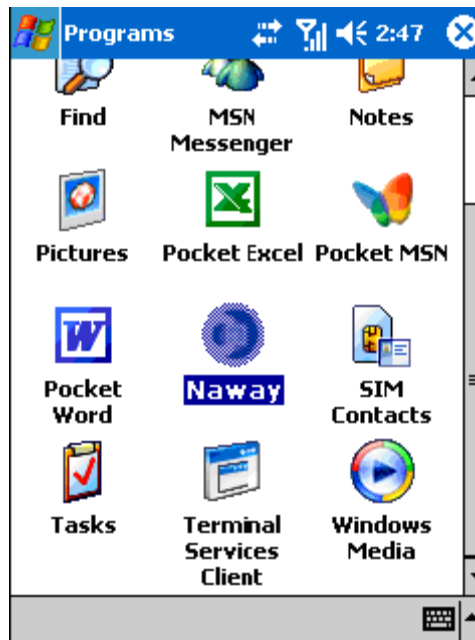
2) Click the program and start to install it, just select default path when it ask you to select install path.



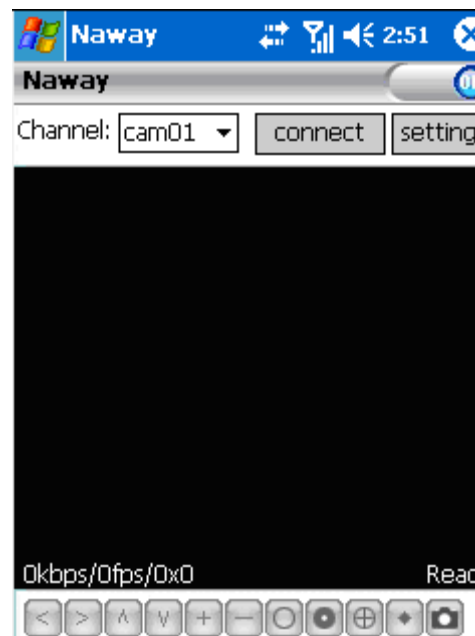
3) Click install button to start to install.



4) After installed, click the QQeye icon to run the program.



5) login the main interface as follow.



Channel: select the channel you want to monitor. When you select a channel, it will connect to DVR automatically.

Connect: press it to connect to DVR.

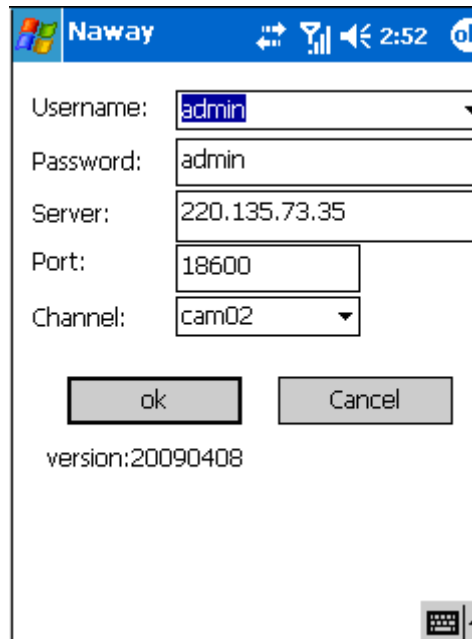
Setup: Press it to enter into the interface to config the parameters for mobile phone monitor.

Button definition: 【PTZ direction control (left、right、up、down)】；【area select (zoom in、zoom out)】；【focus (+、-)】；【aperture (+、-)】；【snapshot】.

Remark: Please make sure the parameters for PTZ in DVR is correct.

Snapshot default save path is: Program>>>QQeye>>> photo

6) When you login for the first time, please setup the network parameters first, press setup to enter into the interface, as follow:



User name: can be blank.

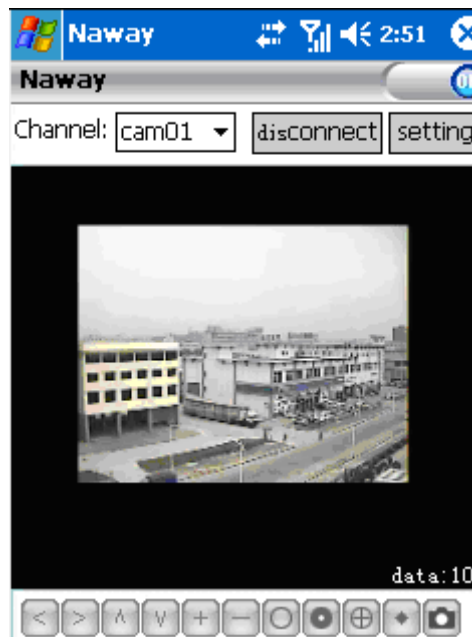
Password: should be the same as IE.

Sever: the public IP or dynamoic domain name of DVR.

Sever port: this port is the mobile port you setup in DVR.

Channel: setup the default channel you want to check.

Please press OK after you finished setup.



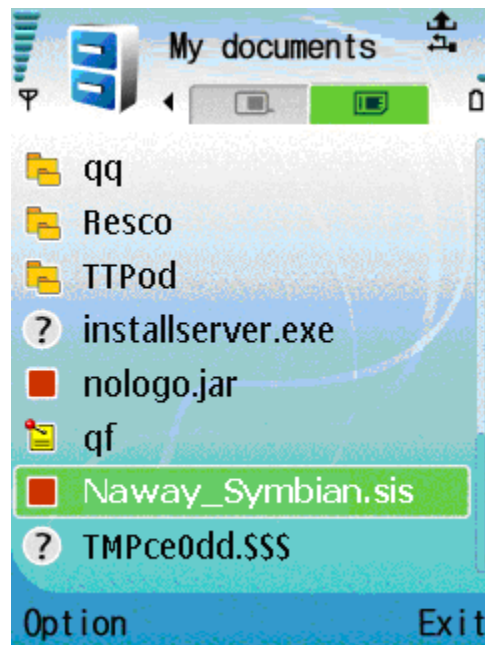
7) Display mode

Normal/Full screen

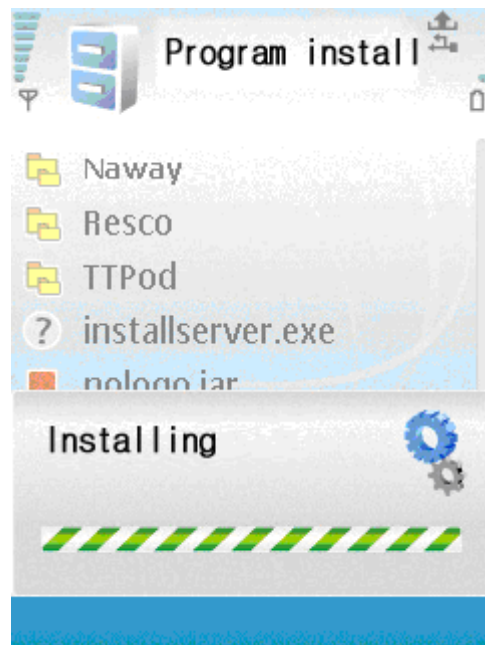
Remark: Click screen can switch the display mode between normal and full screen.

2.2 Symbian Operating system

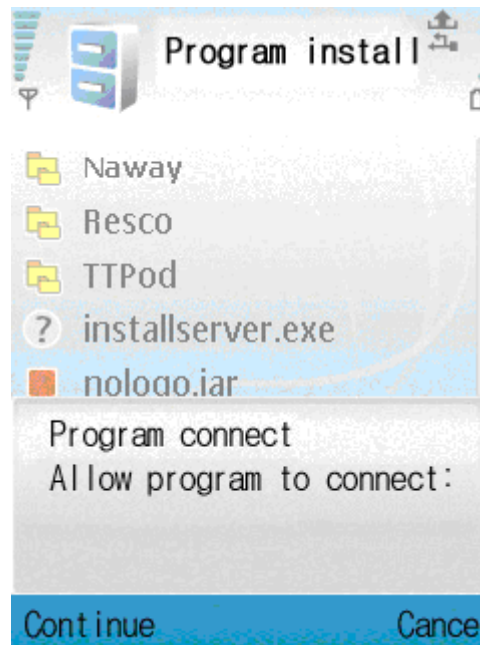
1) Please copy the install program whose name is amplayerssetup.CAB from the attached CD to your mobile phone, the default save path is memory card. As follow:



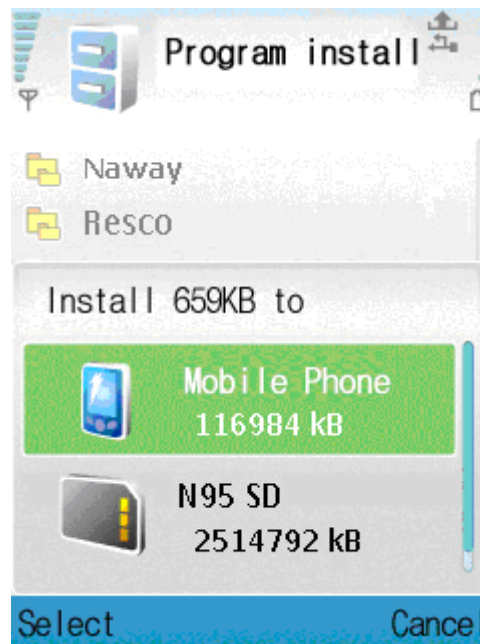
2) Click the program to install it.



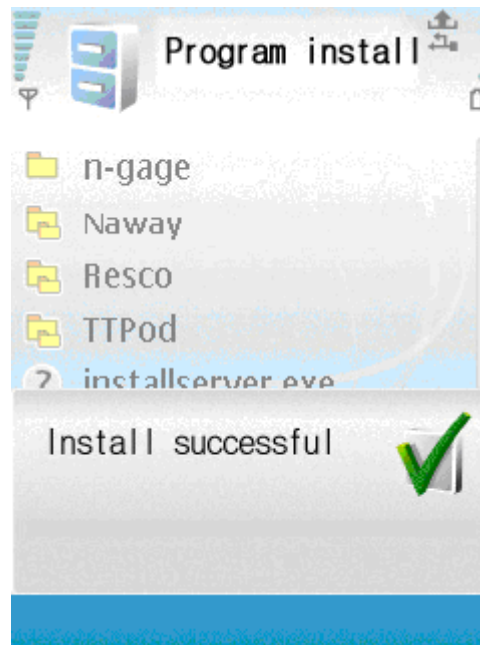
3) You can select the install path you want as the follow picture .



4) Please select continue when you got the follow window, and make sure your mobile phone can access to internet.



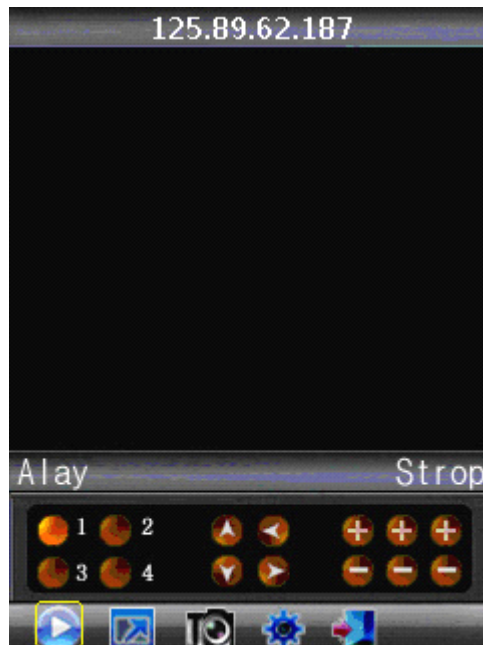
5) you will got a message "install finished" after installed successful.



6) Please find the QQeye icon in Application and run it.



7) when you login, you will find the window as follow:



Button definition:

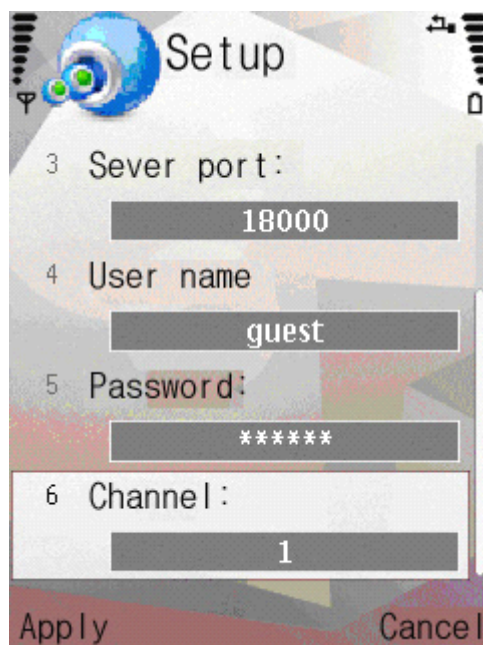
CH1 CH2 PTZ : up left zoom in + focus + aperture +

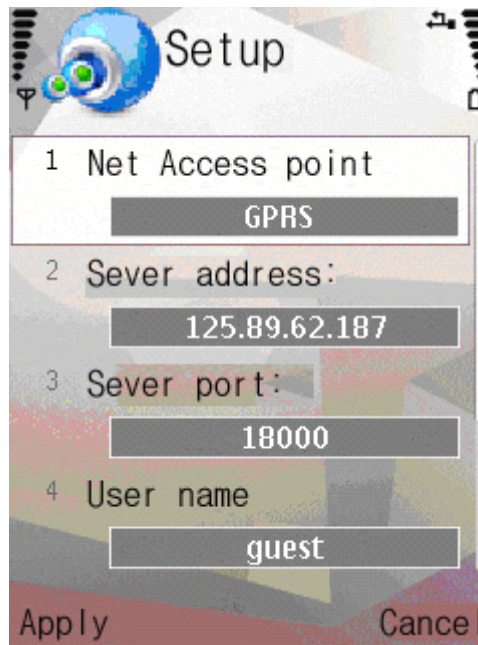
CH3 CH4 PTZ : down right zoom out – focus – aperture –

【Play/Pause】 【Full screen/Normal】 【Snapshot】 【Setup】 【Exit】

Remark: Snapshot default save path is: "C: \Data\Images\"

8) When you login for the first time, please setup the network parameters first, press 【Setup】 to enter into the interface, as follow:





Net Access point: Please select the network, GPRS/EDGE/3G

Sever address: the public IP or dynamic domain name of DVR.

Sever port: the sever port is the mobile port you setup in DVR.

User name: can be blank.

Password: the same as IE.

Channel: setup the default channel you want to check.

Please press Apply after you finished setup.



9) Display mode

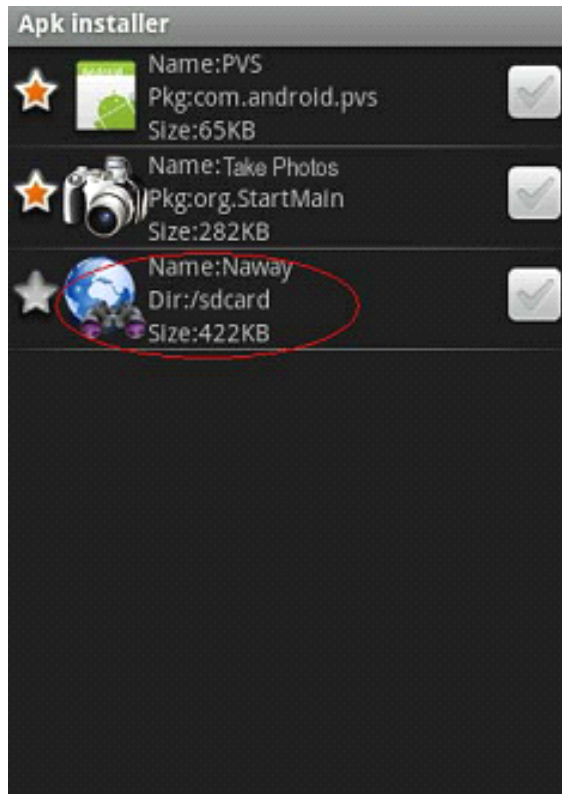
Normal/ Full screen

Remark: Click screen can switch the display mode between normal and full screen.

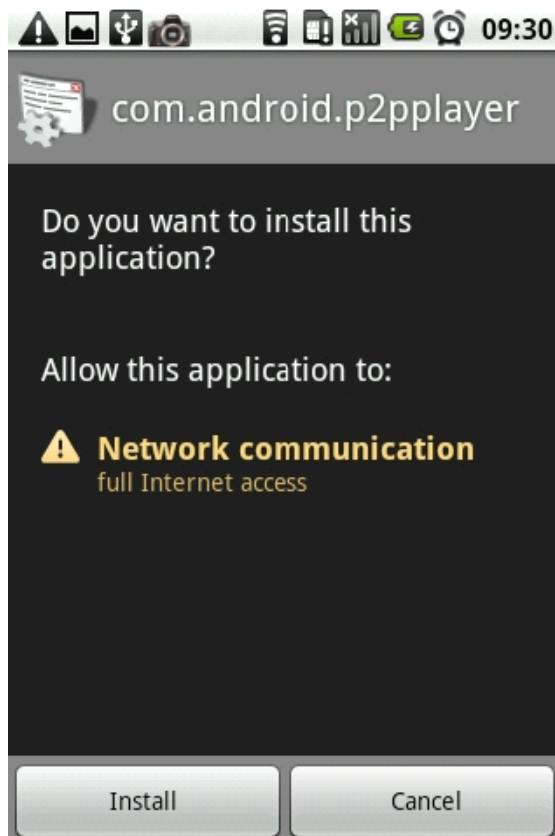
2.3 Android Operating system

1 Install the program

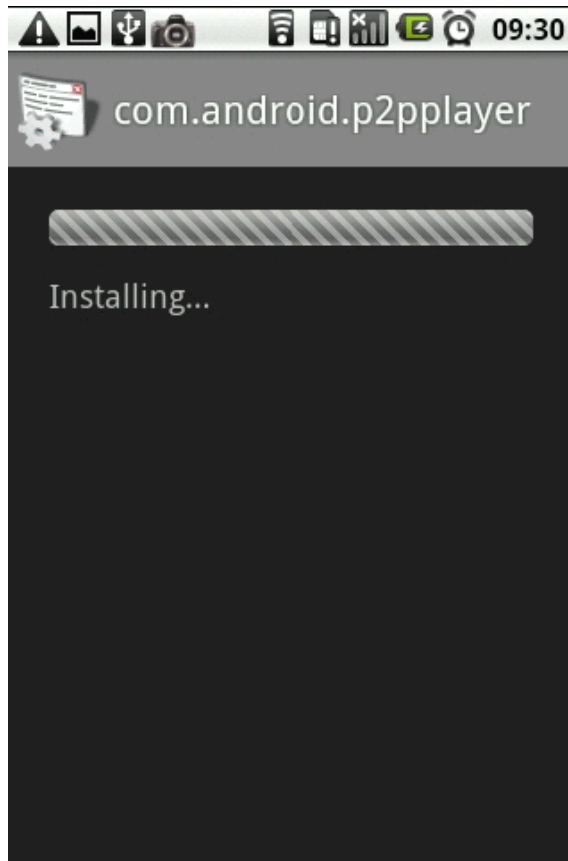
1. Copy the setup software P2PPlayer.apk to SD card.
2. Close USB, access to [Setting] — [Applications] — [Application installer], and then the user can find the setup file:



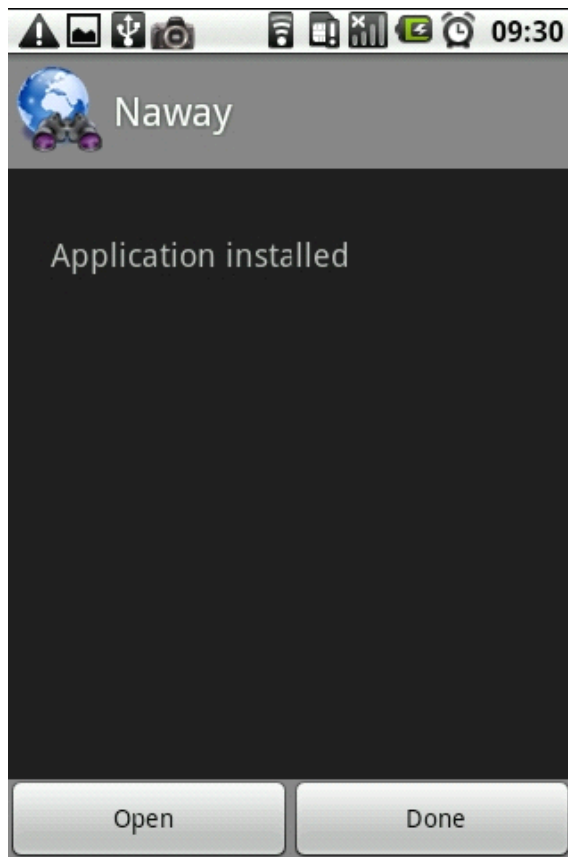
Clue: Do you want to install this application?



Press “Install” button.



If the installation is finished, the picture is as below:

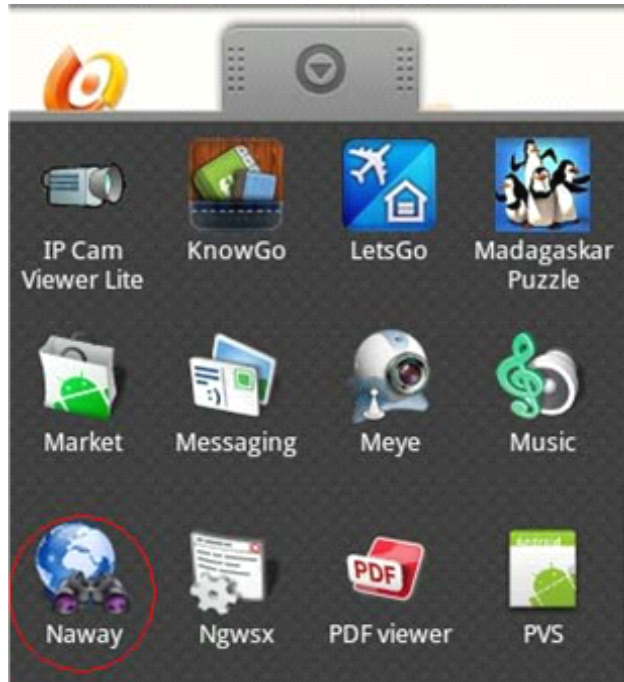


2. System explanation

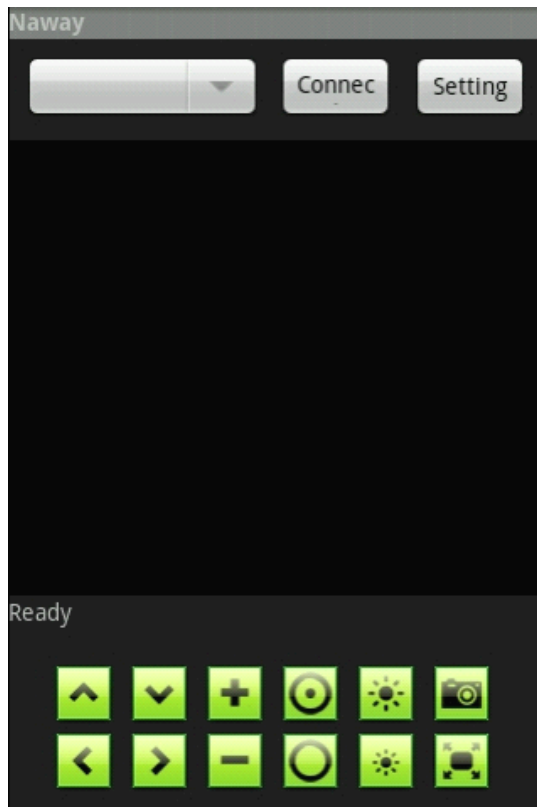
P2PPlayer phone port mainly contain: video surveillance, channel switch, full screen magnify, PTZ control, focus, capture image, save as favorite and exit function.

2.1 System main interface

After the installation, press “Naway” icon in the application, see the below picture:



Open the main interface, see the below picture:



2.2 System setting interface

For the first time using or need to modify the parameters, press [Setting] button to access to the parameters setting.

Favorite:

The record which is saved can be found here;

UserName:

The user name which is set on DVR [phone surveillance];

Password:

The user password which is set on DVR [phone surveillance];

Server:

The public IP address and dynamic domain name of DVR.

Port:

The server port which is set on DVR [mobile phone].

ChannelCount:

Set the quantity of the channel.

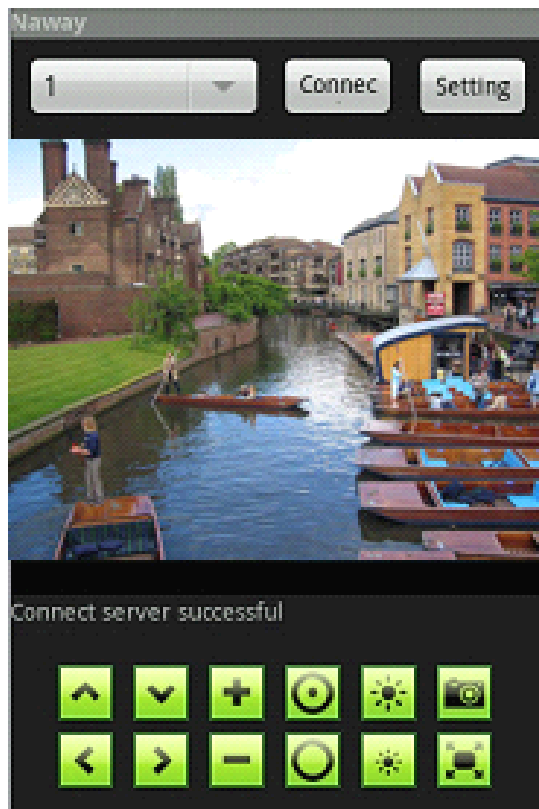
Default channel:

Set the default channel which will do the video surveillance.

RecordName:

Save the name of the record.

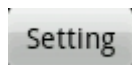
- ① After the setting press [Save] then it will go to the favorite folder. Next time you can find the record in the file.
- ② After the setting press [setting] and back to the front interface.
After the setting, press “connect” button on the main interface and then it will connect the server. In this interface it can also switch the channel, full screen magnify, PTZ control, focus, phone capture and full screen display.



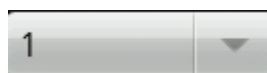
The detail information is as below:



: Press this icon to connect the server



: Press this icon to open the setting interface



: Switch the channel function.



: It can control the PTZ move up, down, left and right.



: It can operate the zoom, focus and iris.



: Press it to enter into full screen mode, press it again back to the common mode.



: Capture the image function.

3 Familiar questions and their answers

- 1: Why it can not connect the server?
 - a: Check the setting page layout, server, port, user name, password is right or not.
 - b: Check the internet; check if the mobile phone is connected with the internet.
- 2: After enter into the main interface, why the user can not control the PTZ?
 - a: Check if the channel has the PTZ.
 - b: The reflection of the PTZ is too slow, please wait for a moment.

2.4 Iphone Operating system

I. The installation of Aplayer



1. Open the icon “App Store”, the below image will appear:

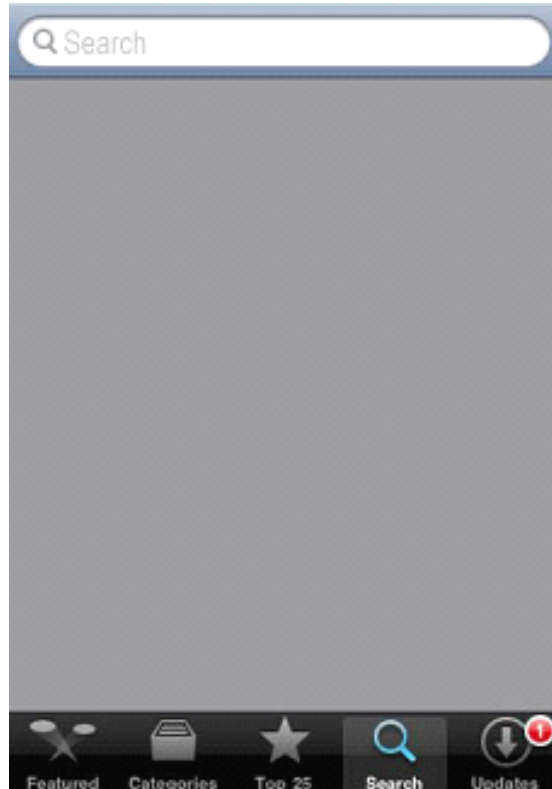




Image 1

2. Click “”, Input “naway” in the searching bar, click “” the below image will appear:

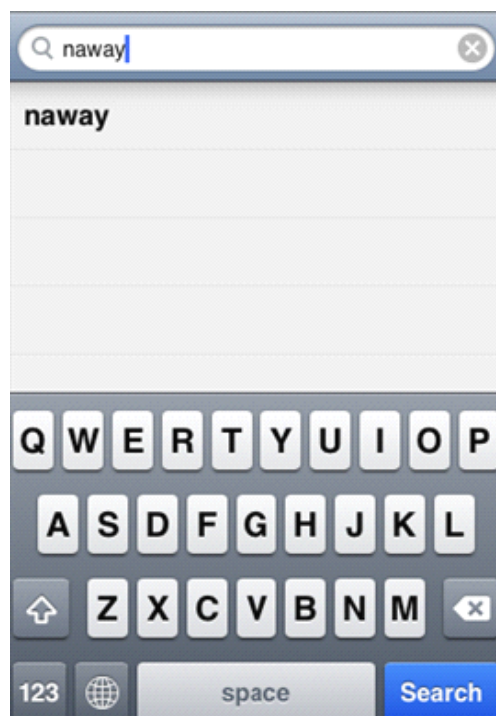


Image 2

3. Then the image 3 will appear:

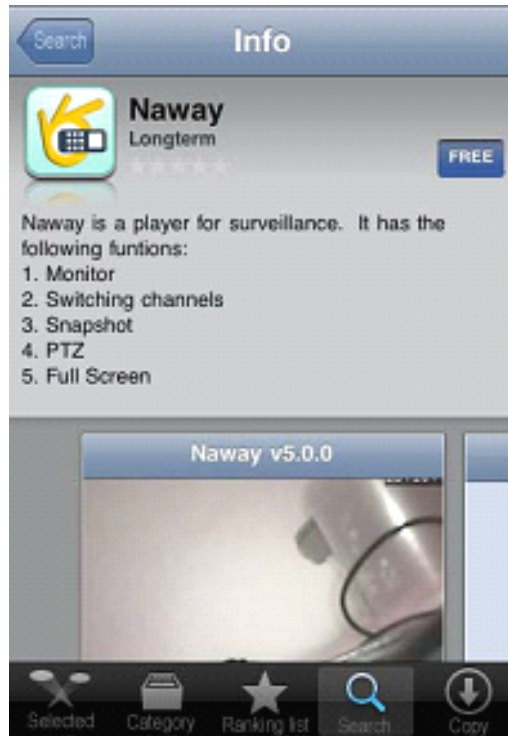


Image 3

4. After click the “FREE” on image 3, the image 4 will appear, click “INSTALL” option on image 4, and the image 5 will appear. Input the password of Apple account on image 5, then click “ok”, image 6 will appear.

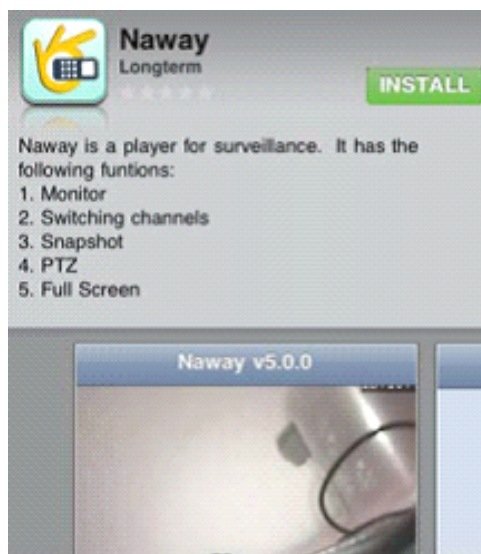


Image 4

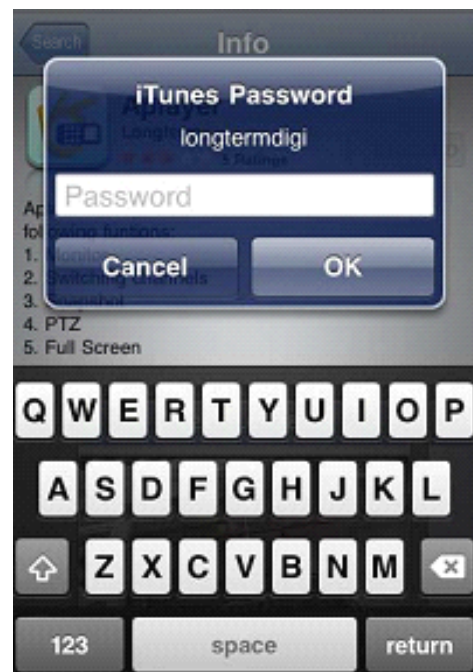


image 5

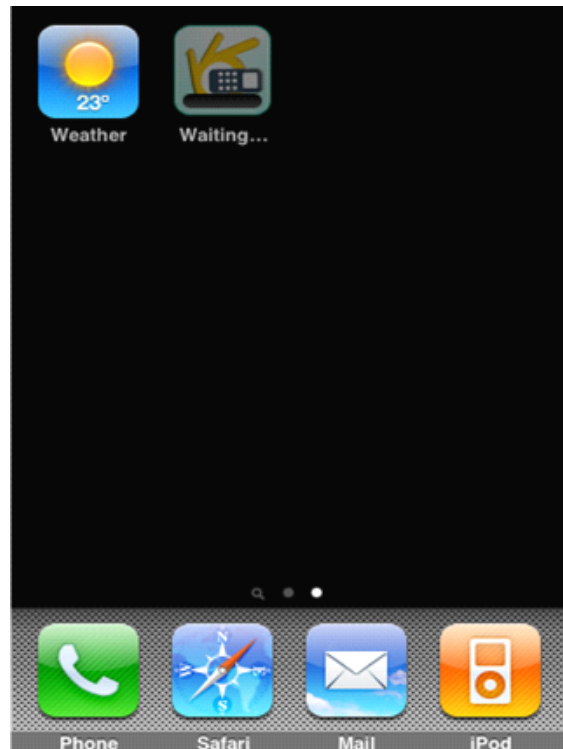
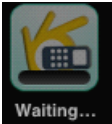
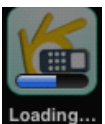

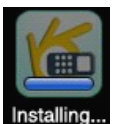


Image 6

5. After  change to  on image 6, it means it is downloading Aplayer software and set it automatically. After the process bar “” of  is full, it means it finishes the installation.

6. After finishing the installation, the interface of the mobile phone will appear Naway icon, like the image 7.

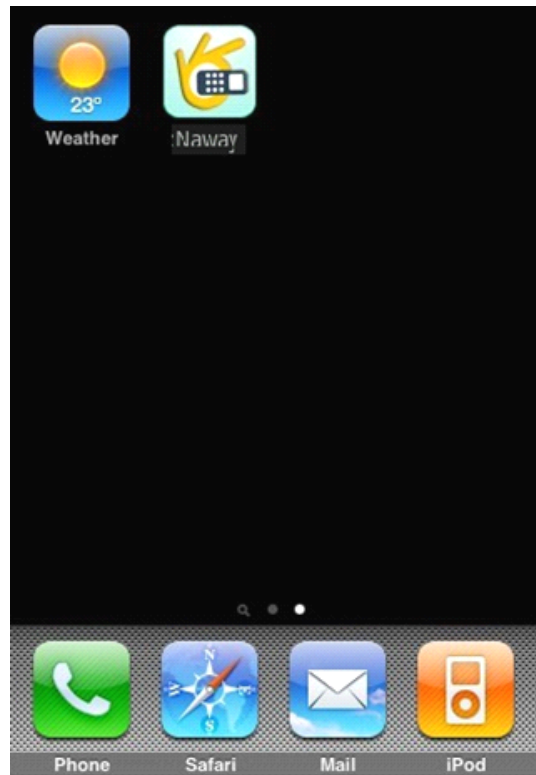
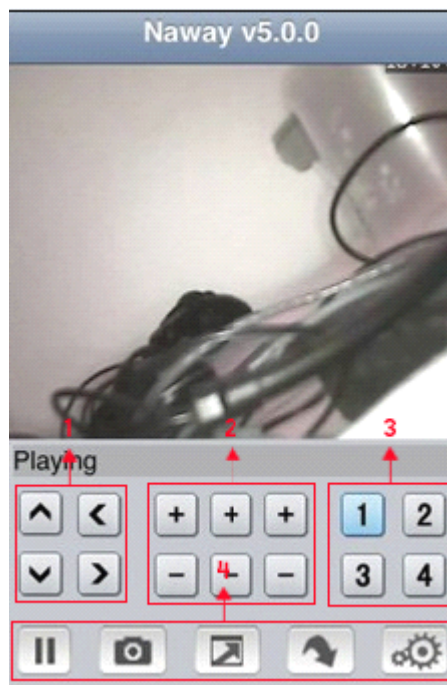


Image7

II. How to use APlayer

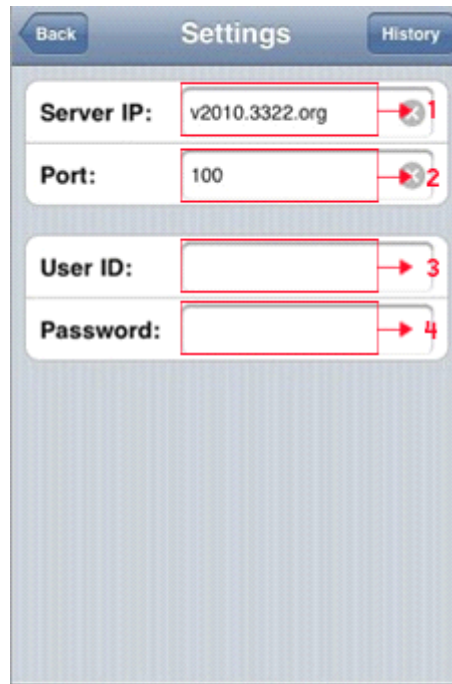
1. Click Aplayer icon, open the software. The introduction of the interface function is as below:



- ① PTZ direction key (up, down, left and right)
- ② PTZ lens control (magnify+, reduce-),(focus+, focus-), (iris+, iris-)
- ③ Choose the monitor channel
- ④ The function of the key from left to right: Pause, capture, full screen mode, next monitor option, monitor connection setting.

⑤ Exit, the middle key of the phone

2. Set the monitor point: it is the same setting with Symbian and Windows.



① IP address of the monitor point

② Network port

③ User name

④ Password

2.5 BlackBerry Operating system

1. Essential Contition

Support the phone with V4.6 upward Blackberry system , 480*360 and 480*320 screen resolution. includes:8900、9000、9700 and 9630, etc.The watching effection will be better if the Blackberry is the special version.

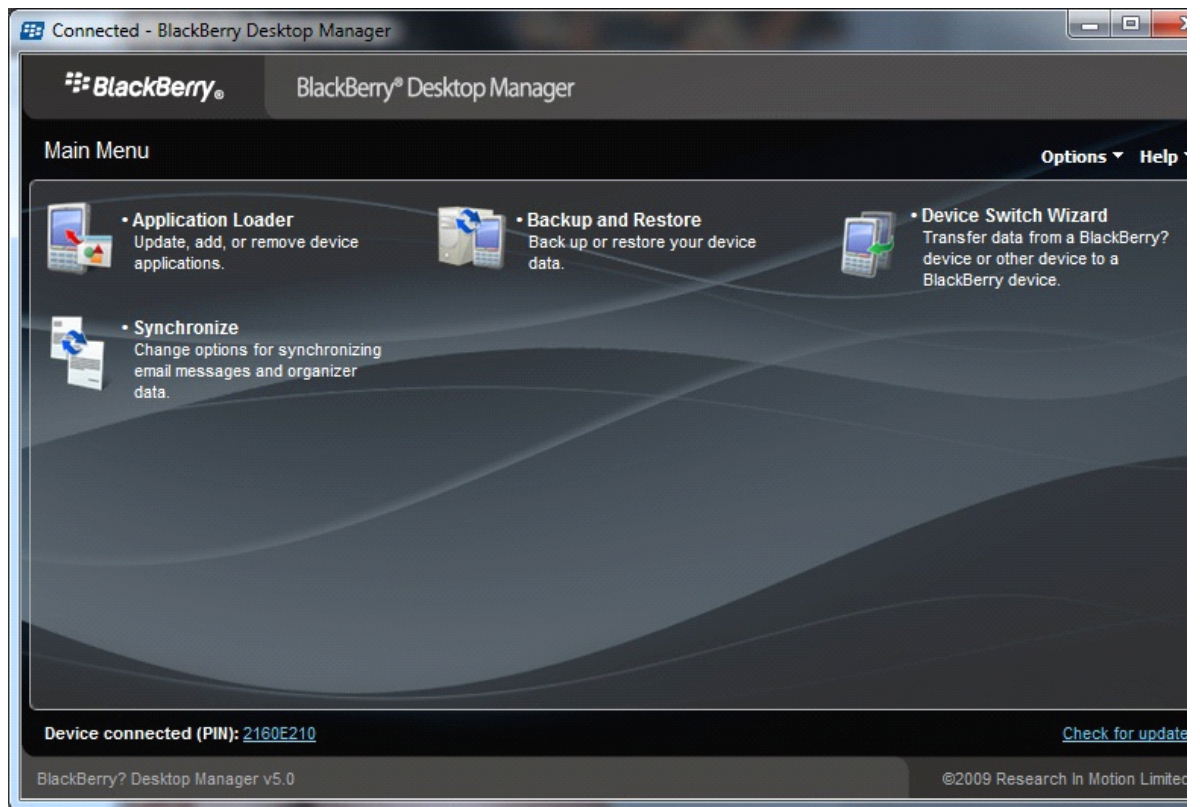
The detail is:

8900/9000 is V5.0.0.90

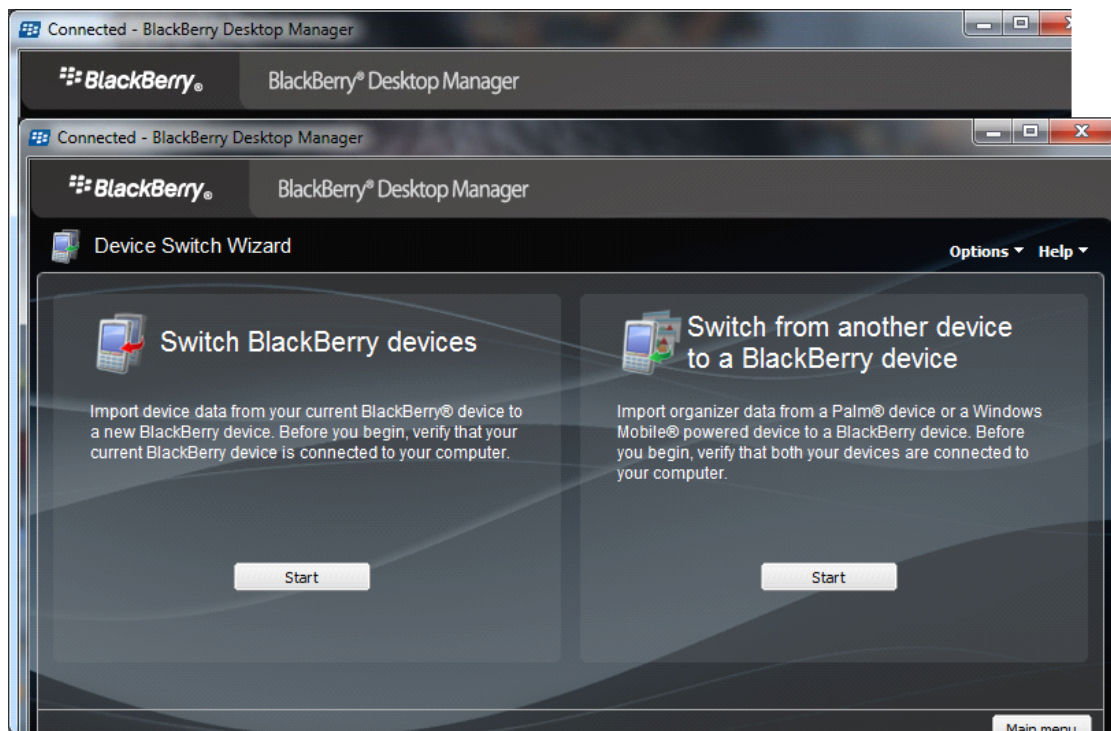
9700 is V5.0.0.714 or V5.0.0.344

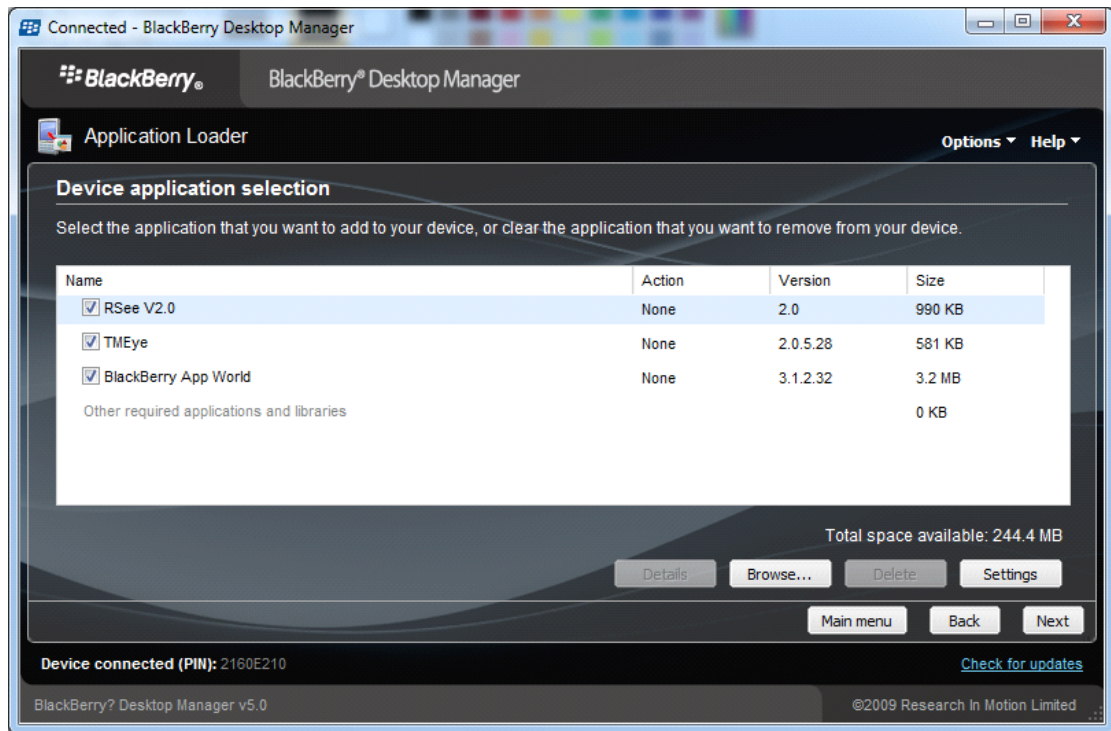
2. Install and the opration

1) Load the TMEye.cod and TMEye.alx Install packages into the Blackberry via the desktop manager

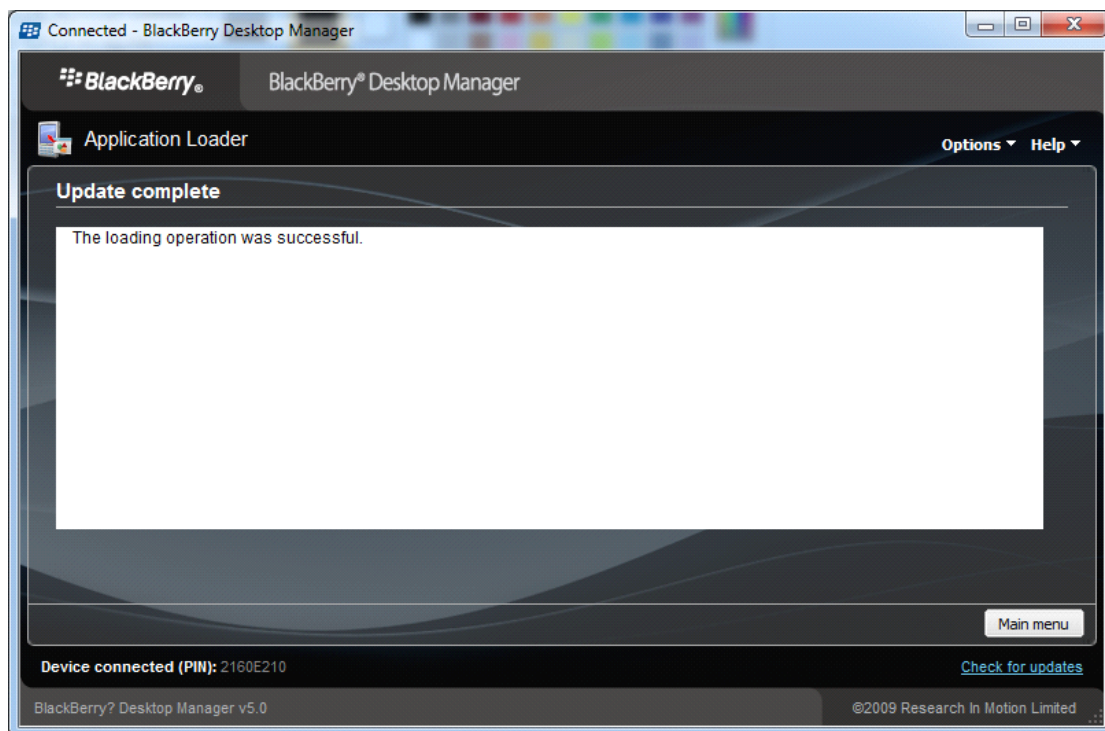


Click the applicated program Application loader,starting



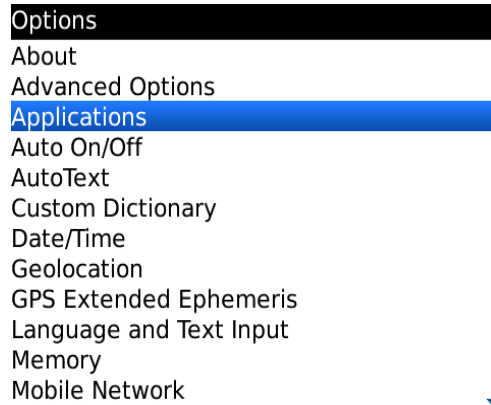


Go into the program install interface, click "browse" and choose the install package of Blackberry monitor software, complete the loading and click next, then finish.



The program will load into the Blackberry automatically, and it shows instantly that the loading operation has been successful after finished.

2) Click "options" on phone desktop, show as the following illustration.



- 3) Click “application” to find the TMEye, enter it and click”Edit Access”, set up all access with “allow”, if some can’t be set up with “allow”(the option is grey and can’t be changed), ignore it and click “save”directly.
- 4) Click TMEye program icon, run the program and get into the initial interface by a Initialized Splash screen .

Note:

Name: the alias is easy to distinguish more device.

Address: The IP VPN address or dynamic DNS.

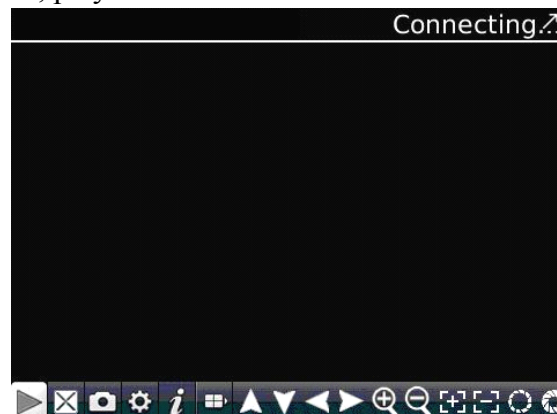
Port: The server port set on DVR

User ID: coincident with the ID set on DVR





Password: coincident with the password set on the DVR




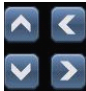
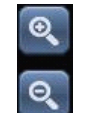
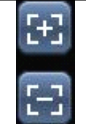

Network Type: choose the network type you want

- 5) Click “load”, play the main interface:



The relative function of the buttons as below:

Function Key	Name	The Description of Function
	Play	Connect the device and start to play the vedio
	Full Screen	Play with full screen
	Capture	Capture the current image (save the capture image to the defult photo content of the defult phone)
	Setup	Set the DVR’s IP address or dynamic DNS、 port、 user name、 password and device alias

	Next	Enable to choose the next channel
	About	About the information
	Choose the channel	Select to play the video from one channel
	PTZ control	Control the PTZ up、down、left or right
	Zoom	Get far or close
	Focal length	Addition and subtraction to achieve Focal length
	Aperture	Addition and subtraction to achieve aperture

6) The mode of video display

Switch between normal mode and full screen mode .

normal mode

